

Kerala State Pollution Control Board
Pattom P.O., Thiruvananthapuram - 695 004
Head Office: 0471 - 2318153, 54, 55, 56, 2312910



Continuous Ambient Air Quality Monitoring Station



Annual Report 2016

Operated and Maintained by:-

Envirotech Online Equipments Private Limited
Plot No. 325, HMT Hills,
Opp. JNTU Road, Kukatpally,
Hyderabad- 500085. INDIA
Tel: 040-40170987,
Fax: 040 42005078
E-mail: sathish.mogulapally@ecotech.com





Kerala State Pollution Control Board

Continuous Ambient Air Quality Monitoring Station, Trivandrum

Yearly Report on Criteria

2016

| Month | CO (mg/m ³) | Ozone (µg/m ³) | NO (µg/m ³) | NO ₂ (µg/m ³) | NO _X (µg/m ³) | NH ₃ (µg/m ³) | SO ₂ (µg/m ³) | PM _{2.5} (µg/m ³) | PM ₁₀ (µg/m ³) |
|----------------|----------------------------|-------------------------------|----------------------------|---|---|---|---|---|--|
| January | 1.22 | 8.1 | 1.0 | 8.7 | 9.7 | 10.9 | 6.0 | 57 | 88 |
| February | 1.18 | 8.6 | 7.0 | 13.6 | 20.6 | 35.7 | 1.8 | 47 | 78 |
| March | 0.96 | 7.8 | 4.6 | 10.7 | 15.3 | 37.1 | 1.3 | 33 | 60 |
| April | 0.89 | 5.2 | 5.2 | 9.4 | 14.7 | 41.6 | 1.0 | 27 | 58 |
| May | 0.90 | 3.1 | 6.7 | 6.8 | 13.3 | 39.1 | 1.3 | 18 | 36 |
| June | 0.82 | 0.9 | 11.9 | 5.6 | 17.4 | 15.8 | 1.4 | 13 | 29 |
| July | 0.72 | 1.8 | 10.7 | 6.1 | 16.8 | 30.1 | 2.7 | 15 | 32 |
| August | 1.36 | 6.3 | 20.8 | 8.3 | 29.2 | 57.1 | 3.0 | 15 | 38 |
| September | 1.59 | 8.1 | 9.3 | 8.4 | 17.8 | 42.9 | 3.5 | 17 | 40 |
| October | 0.64 | 8.9 | 0.9 | 9.1 | 10.0 | 50.5 | 2.8 | 22 | 43 |
| November | 0.95 | 9.5 | 1.4 | 12.0 | 13.4 | 52.6 | 3.5 | 47 | 70 |
| December | 1.05 | 9.4 | 2.2 | 10.1 | 12.3 | 43.0 | 4.5 | 45 | 73 |
| Average | 1.01 | 6.5 | 6.8 | 9.1 | 15.9 | 38.1 | 2.9 | 30 | 54 |
| Minimum | 0.64 | 0.9 | 0.9 | 5.6 | 9.7 | 10.9 | 1.0 | 13 | 29 |
| Maximum | 1.59 | 9.5 | 20.8 | 13.6 | 29.2 | 57.1 | 6.0 | 57 | 88 |
| Capture | 94.9 | 94.9 | 93.6 | 93.8 | 93.6 | 92.6 | 87.4 | 93.3 | 94.4 |

| | | | | | | | | | |
|--------------------|-----------|------------|---|-----------|---|------------|-----------|-----------|------------|
| NAAQ Std. (1Hr.) | 04 | 180 | - | - | - | - | - | - | - |
| NAAQ Std. (8Hr.) | 02 | 100 | - | - | - | - | - | - | - |
| NAAQ Std. (24Hr.) | - | - | - | 80 | - | 400 | 80 | 60 | 100 |
| NAAQ Std. (Annual) | - | - | - | 40 | - | 100 | 50 | 40 | 60 |



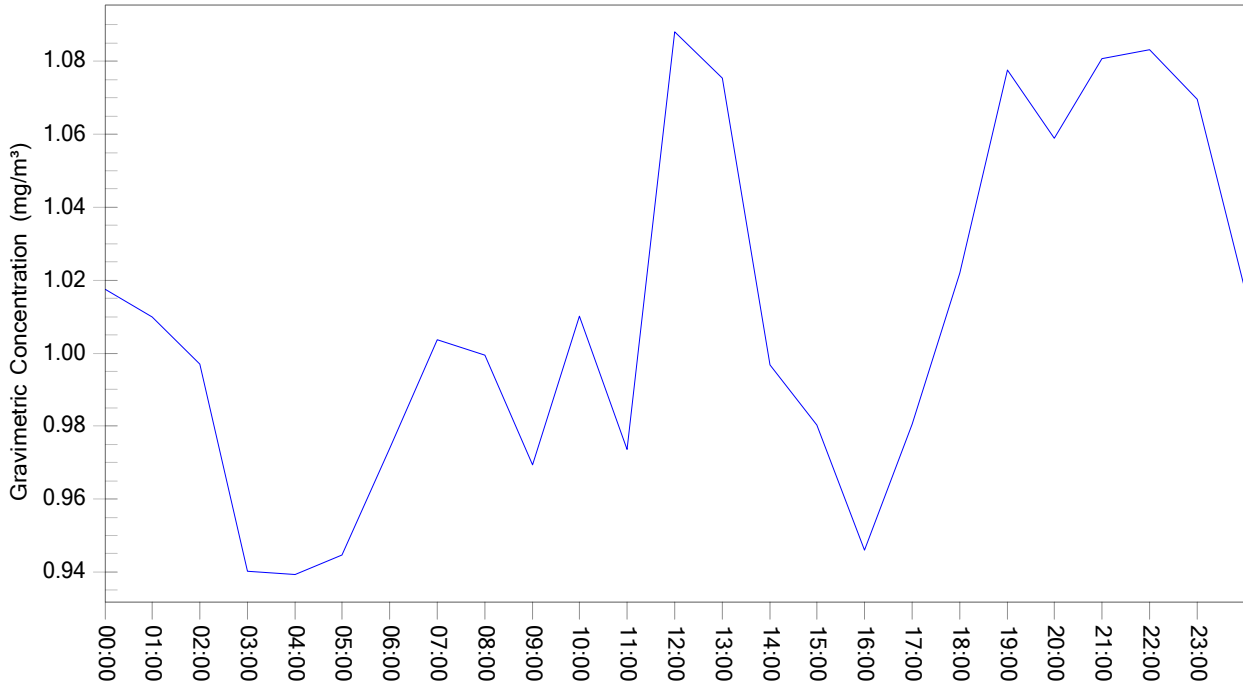
Kerala State Pollution Control Board

Continuous Ambient Air Quality Monitoring Station, Trivandrum

Trend Gaphs for CO

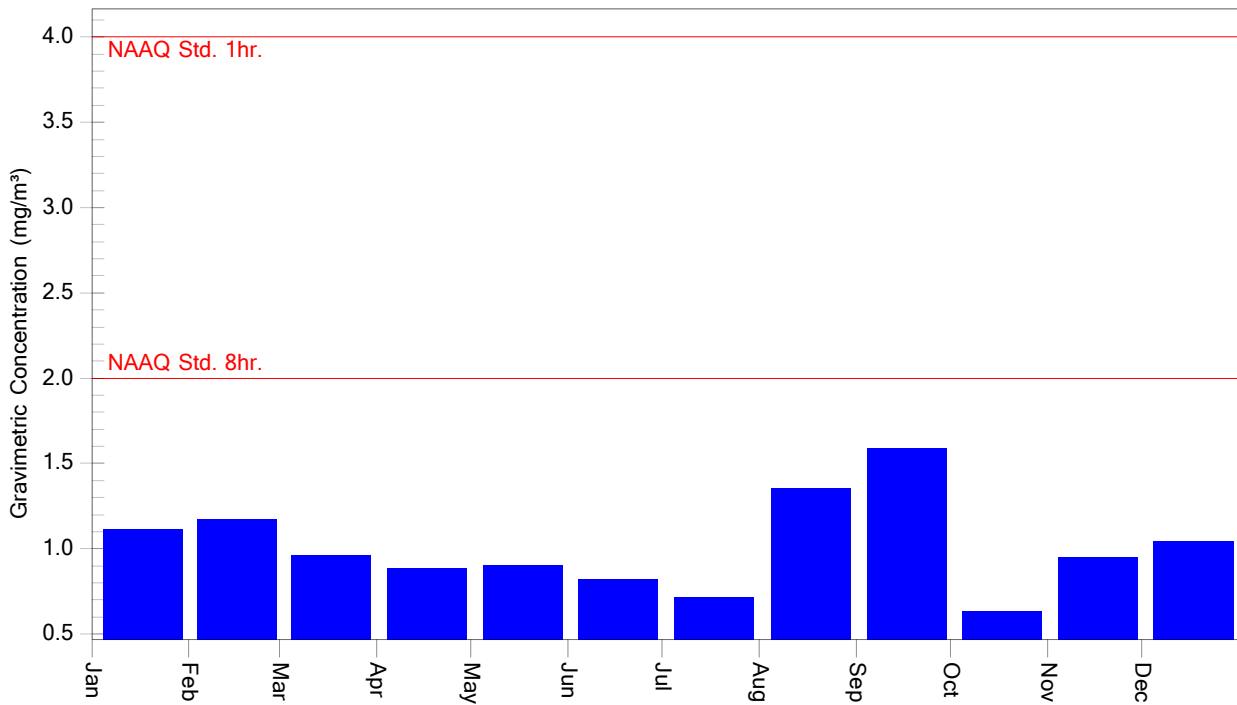
CO(mg/m³) Line Graph

1/1/2016 to 12/31/2016



CO(mg/m³) Bar Graph

1/1/2016 to 12/31/2016





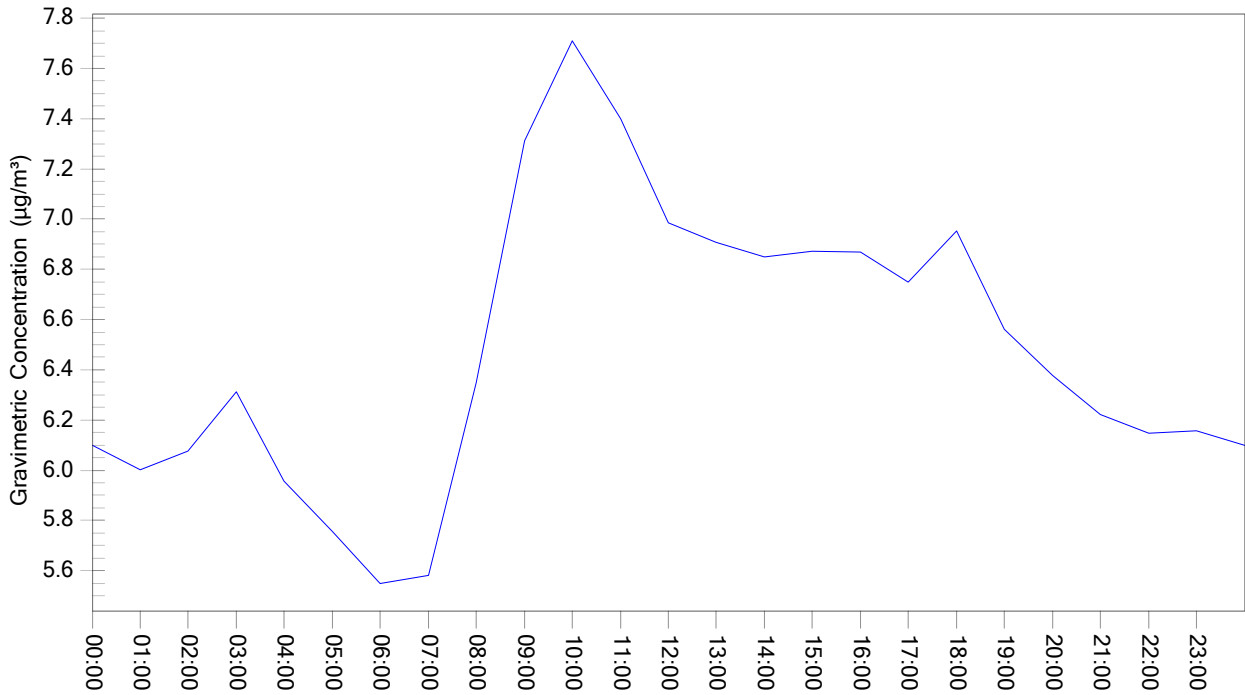
Kerala State Pollution Control Board

Continuous Ambient Air Quality Monitoring Station, Trivandrum

Trend Gaphs for Ozone

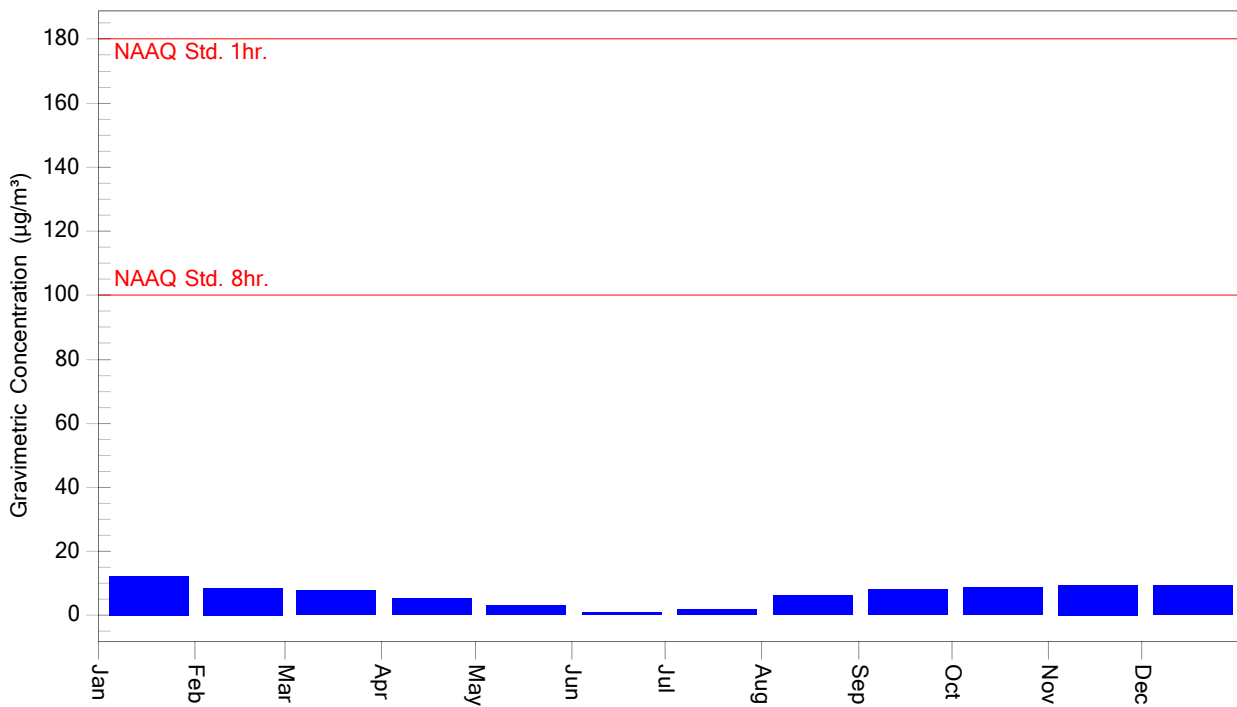
O₃($\mu\text{g}/\text{m}^3$) Line Graph

1/1/2016 to 12/31/2016



O₃($\mu\text{g}/\text{m}^3$) Bar Graph

1/1/2016 to 12/31/2016





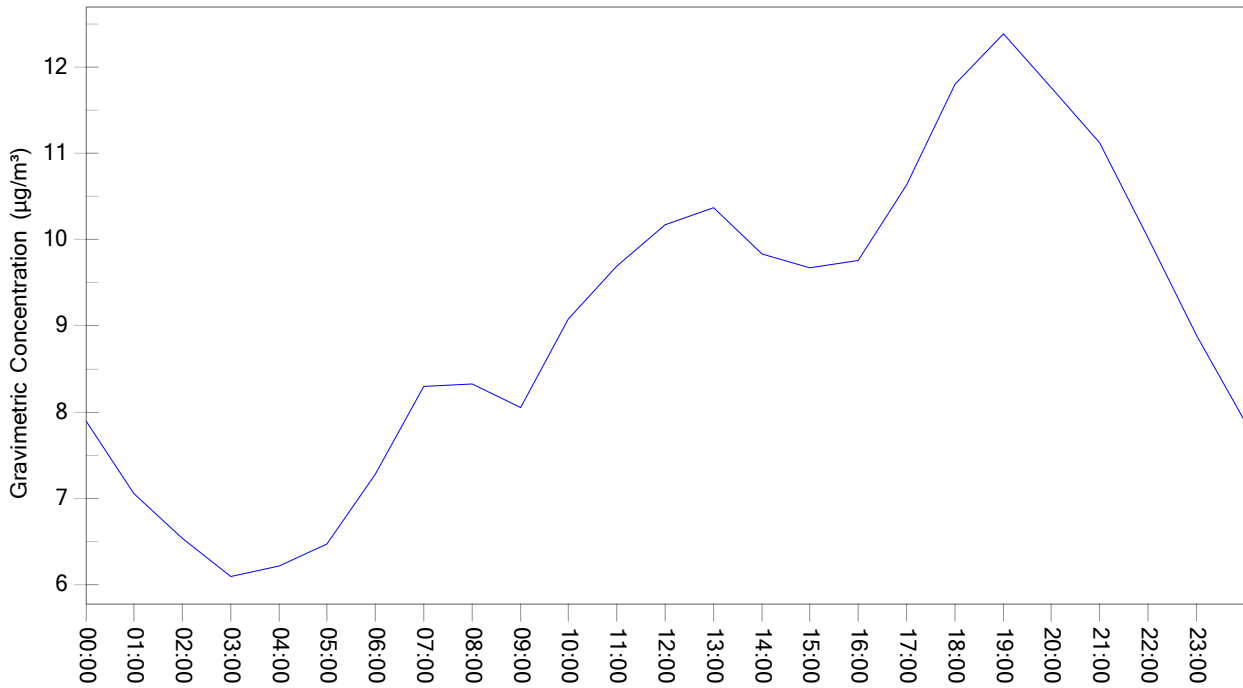
Kerala State Pollution Control Board

Continuous Ambient Air Quality Monitoring Station, Trivandrum

Trend Gaphs for NO2

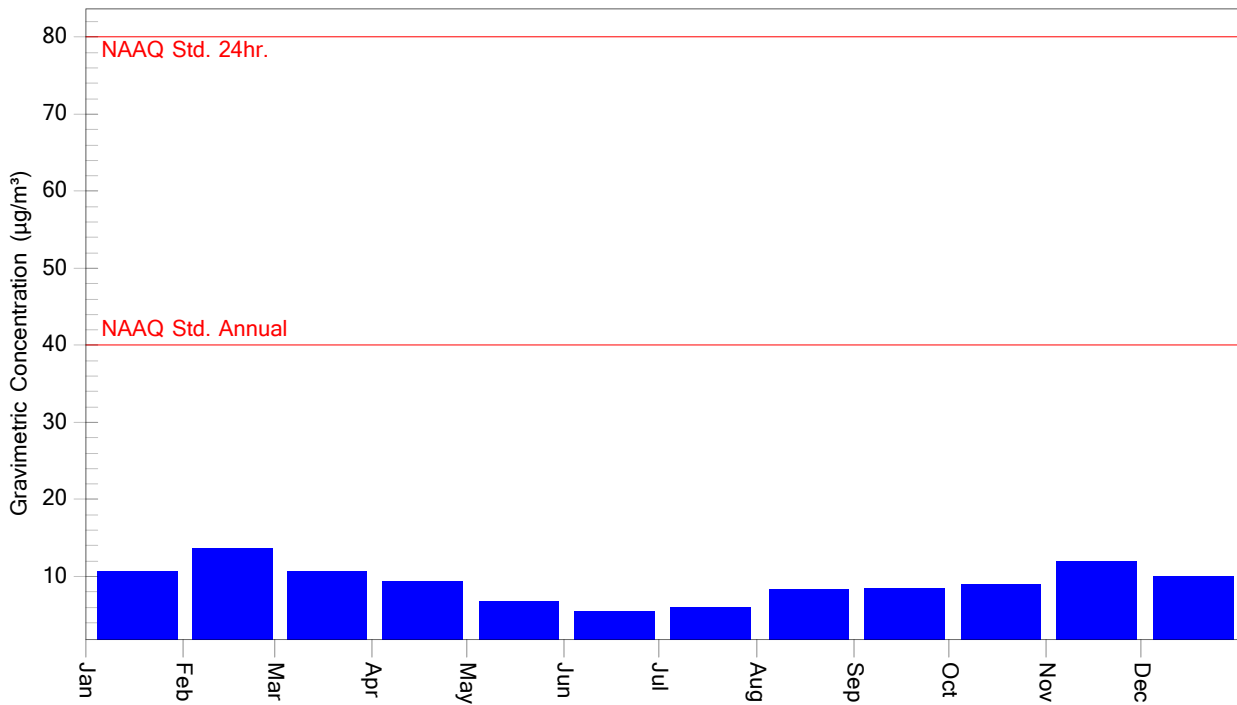
NO₂($\mu\text{g}/\text{m}^3$) Line Graph

1/1/2016 to 12/31/2016



NO₂($\mu\text{g}/\text{m}^3$) Bar Graph

1/1/2016 to 12/31/2016





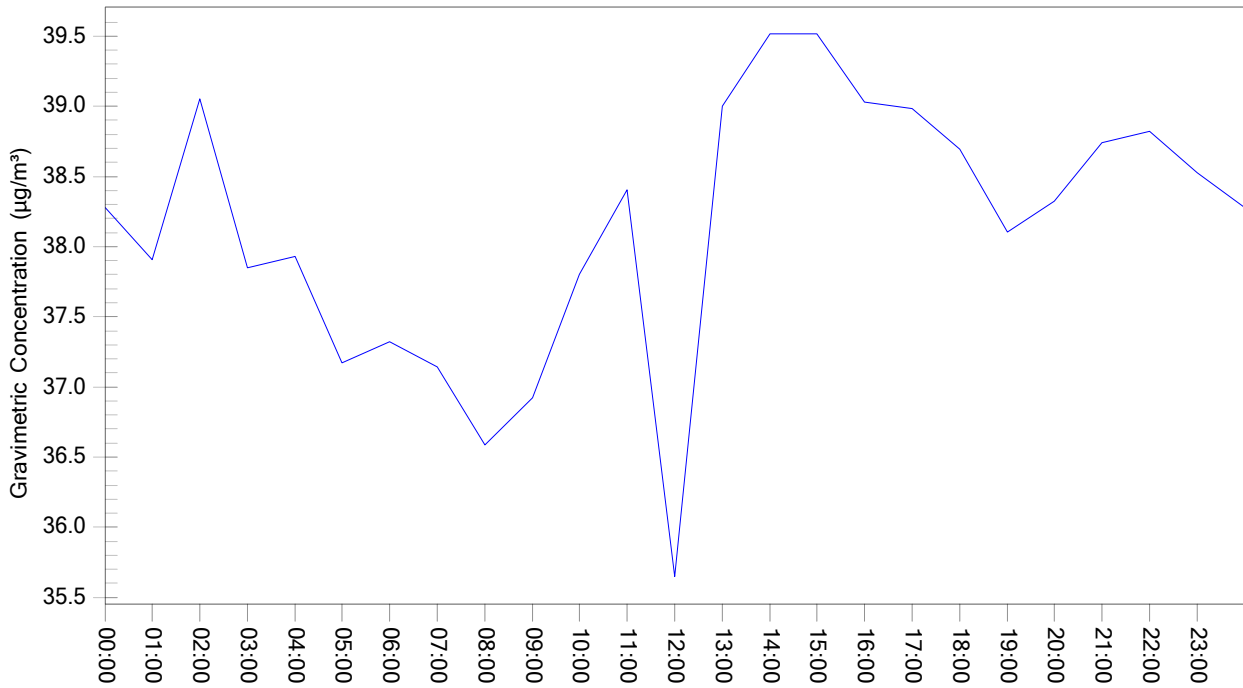
Kerala State Pollution Control Board

Continuous Ambient Air Quality Monitoring Station, Trivandrum

Trend Gaphs for NH3

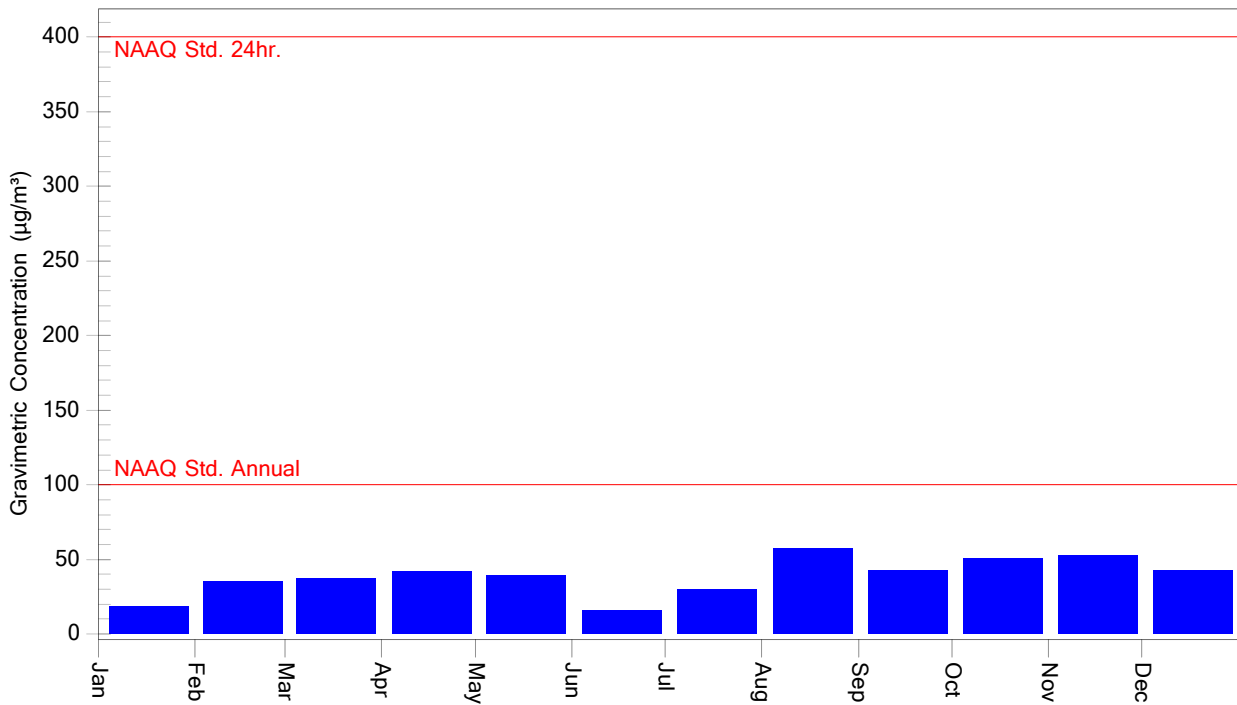
NH3($\mu\text{g}/\text{m}^3$) Line Graph

1/1/2016 to 12/31/2016



NH3($\mu\text{g}/\text{m}^3$) Bar Graph

1/1/2016 to 12/31/2016





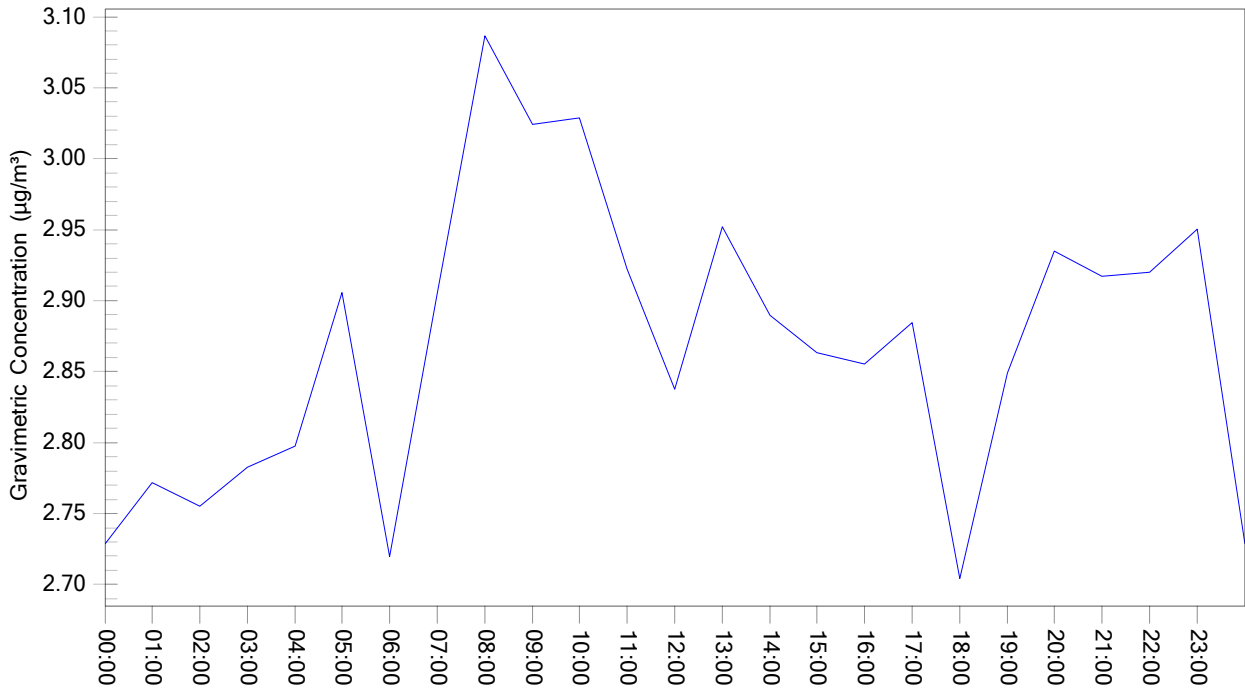
Kerala State Pollution Control Board

Continuous Ambient Air Quality Monitoring Station, Trivandrum

Trend Gaphs for SO2

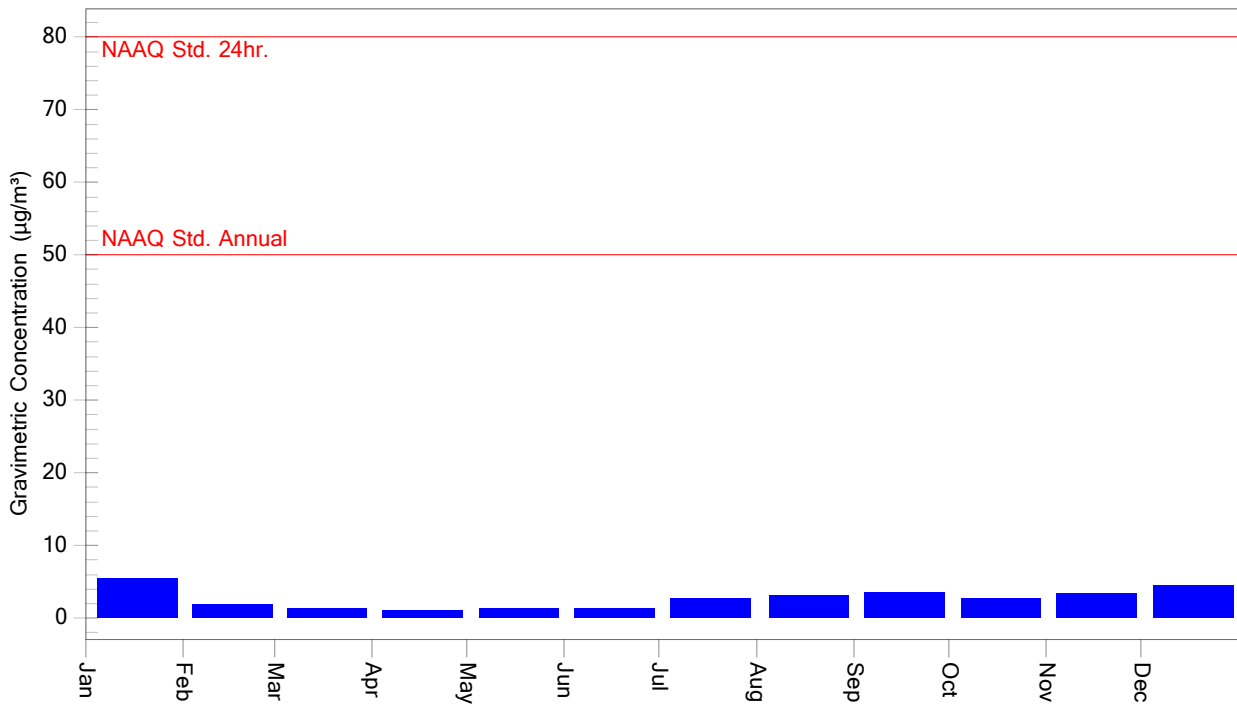
SO2($\mu\text{g}/\text{m}^3$) Line Graph

1/1/2016 to 12/31/2016



SO2($\mu\text{g}/\text{m}^3$) Bar Graph

1/1/2016 to 12/31/2016





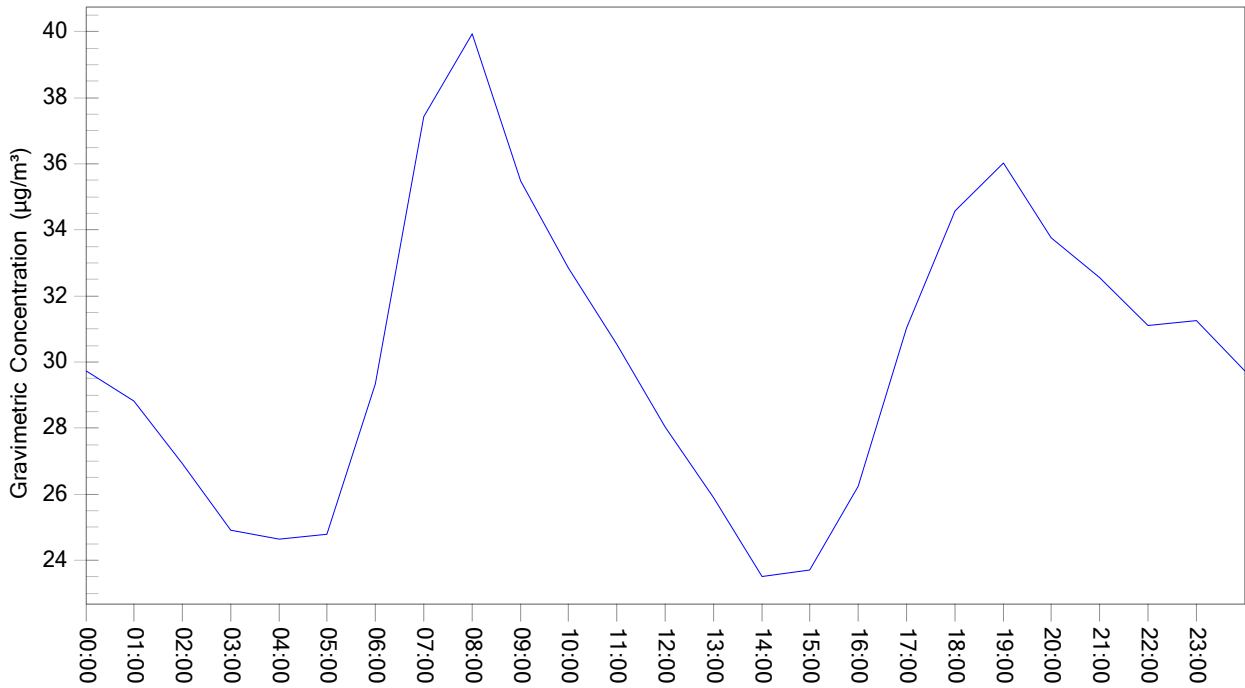
Kerala State Pollution Control Board

Continuous Ambient Air Quality Monitoring Station, Trivandrum

Trend Gaphs for PM2.5

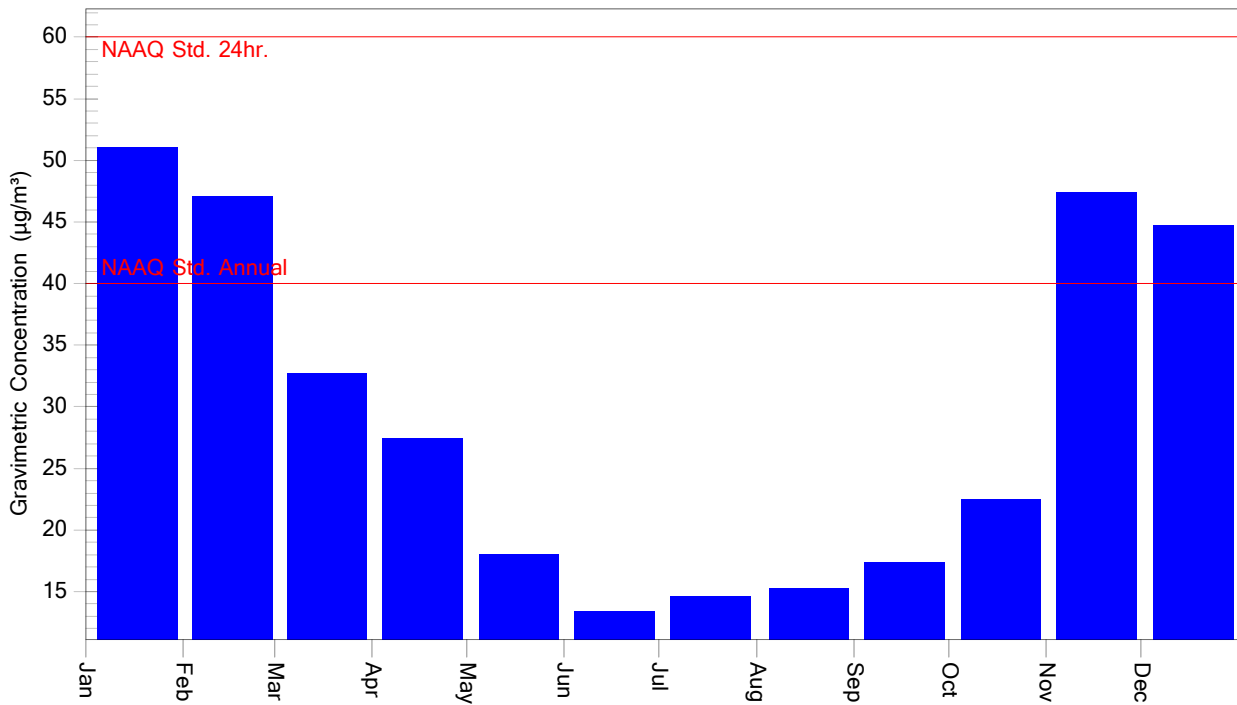
PM2.5($\mu\text{g}/\text{m}^3$) Line Graph

1/1/2016 to 12/31/2016



PM2.5($\mu\text{g}/\text{m}^3$) Bar Graph

1/1/2016 to 12/31/2016





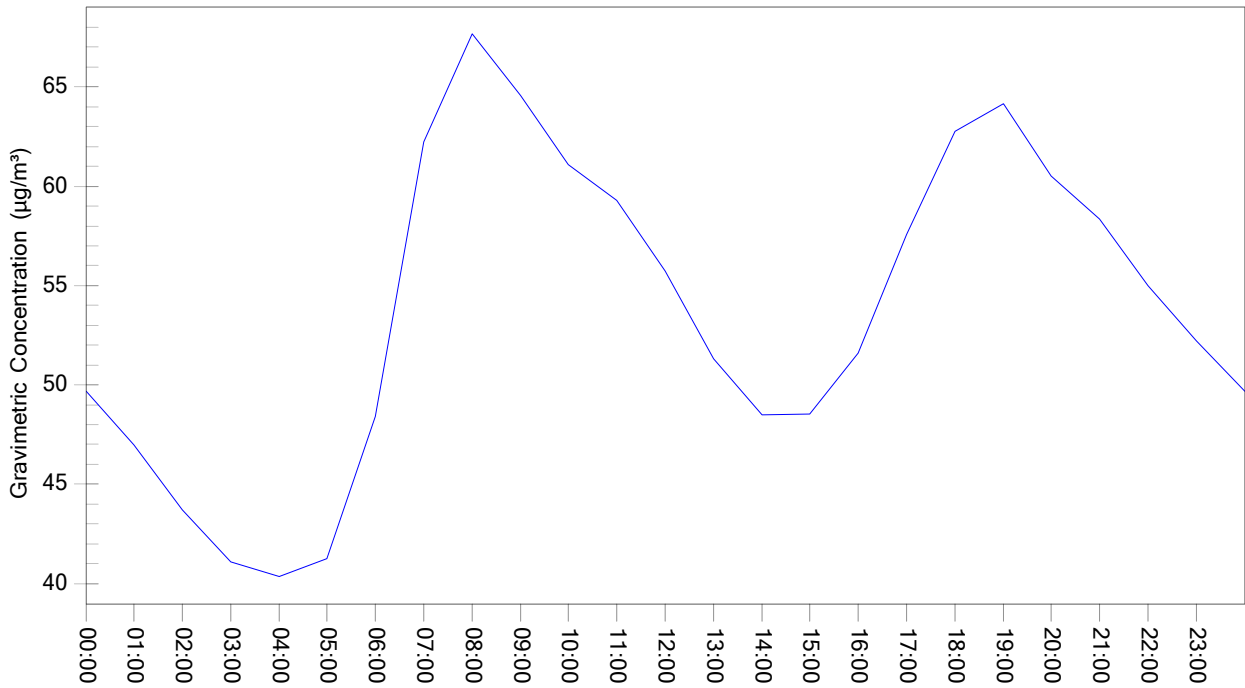
Kerala State Pollution Control Board

Continuous Ambient Air Quality Monitoring Station, Trivandrum

Trend Gaphs for PM10

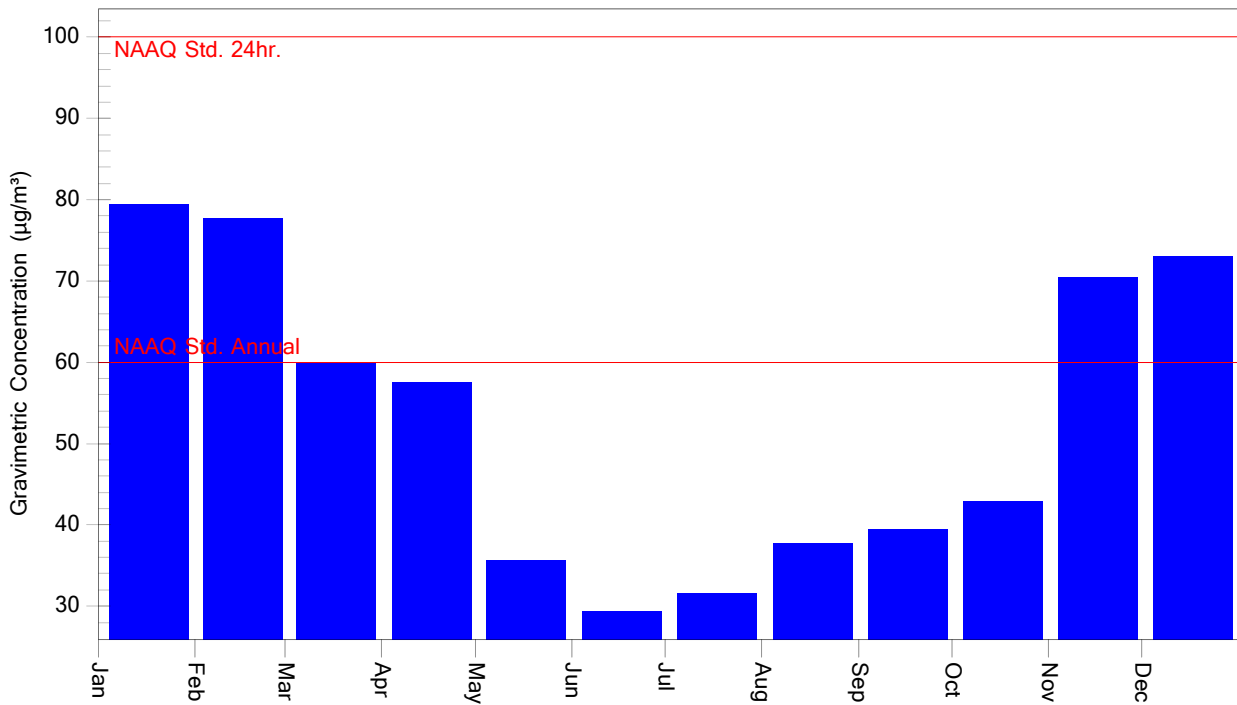
PM10($\mu\text{g}/\text{m}^3$) Line Graph

1/1/2016 to 12/31/2016



PM10($\mu\text{g}/\text{m}^3$) Bar Graph

1/1/2016 to 12/31/2016



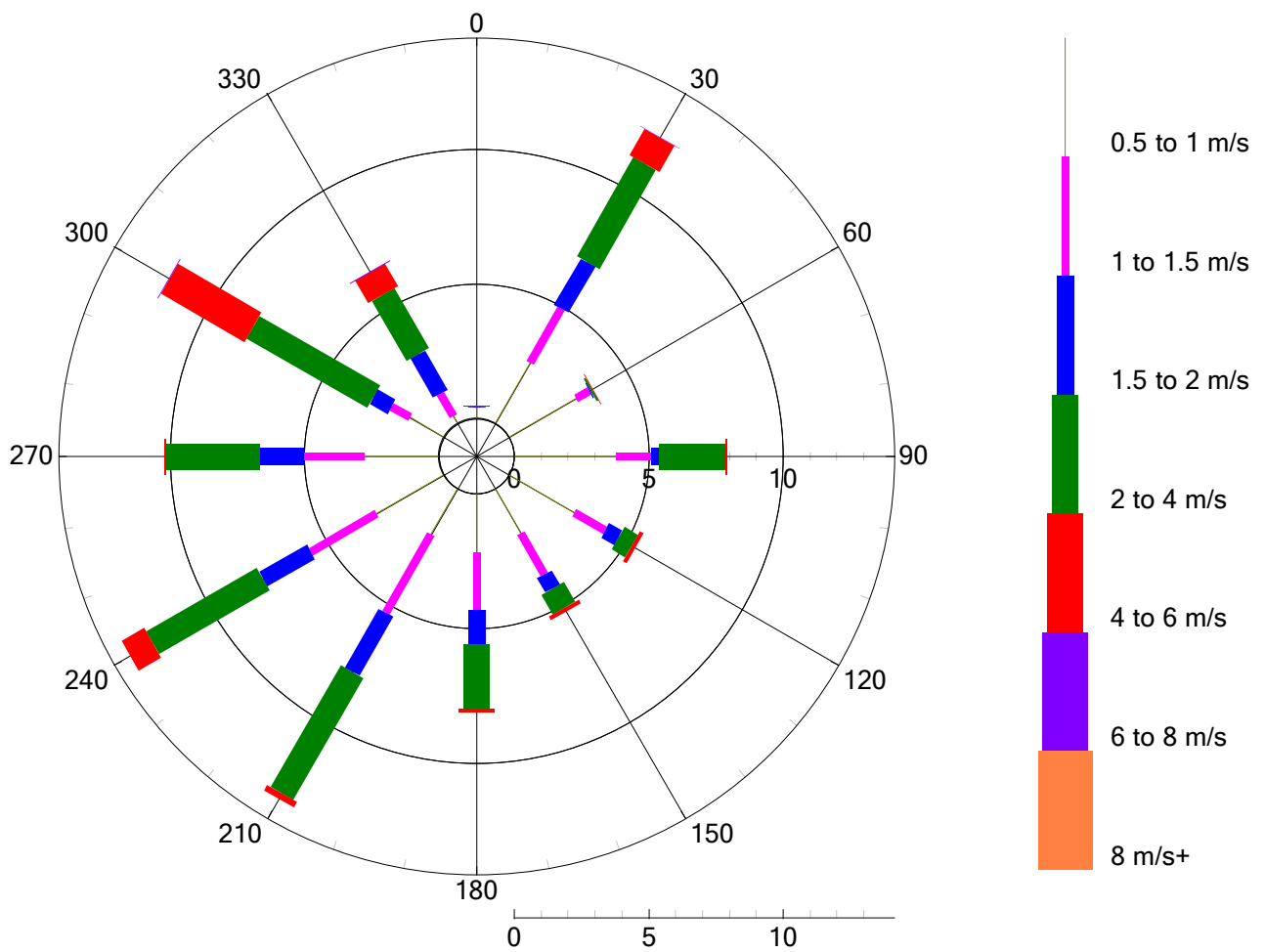


Kerala State Pollution Control Board

Continuous Ambient Air Quality Monitoring Station, Trivandrum

Wind Rose

1/1/2016 to 12/31/2016



1.8% calm
94.9% valid data present

Prepared by: -



Envirotech Online Equipments Pvt. Ltd.
Plot No: 325, HMT Hills, Opp: JNTU Road
Kukatpally, Hyderabad – 500 085.

Tel: +91 40 40170987
Fax: +91 40 42005078
Email: envirotechonline@gmail.com

www.envirotechonline.com